

## PEM - 607

# Installation, Maintenance and Operating Instructions

### DESCRIPTION

Floor mounted EMERGENCY DELUGE SHOWER and NON AERATED EYE WASH combination unit. Shower is supplied with a 25mm stay open full flow ball valve, activated by a triangle pull rod and foot pedal. Eye wash is supplied with a 12mm stay open full flow ball valve, activated by a activation push handle or foot pedal. Manufactured to comply with AS4775-2007.

### SPECIFICATIONS

#### SHOWER

SHOWER HEAD- 200mm ABS Cyclac  
ACTIVATOR- 25mm Stainless Steel  
VALVE - 304 Stainless Steel

#### EYE WASH

EYE WASH- Non Aerated, PVC Plastic  
VALVE- 12mm Stainless Steel  
ACTIVATOR- 304 Stainless Steel Paddle Handle  
ACTIVATOR—304 Stainless Steel Foot Treadle  
STANCHION- 304 Stainless Steel Tube  
BASE PLATE- 304 Stainless Steel

### INSTALLATION

After unpacking carton, ensure all components are present. Mark out the floor and mount the bottom stanchion section using suitable anchors (10-12mm x 50 Dynabolt). Then assemble top section (use pipe sealant on all joints). Assemble pull rod and shower head, attach push handle and foot pedal. Once the unit is completely assembled connect water supply to 25mm top inlet nipple. Failure to use potable water can result in emergency units producing impure or contaminated water causing possible further injury. Test unit.

**NOTE:** This unit should be connected to an uninterrupted source of potable water, no less than 25mm (1"), with a minimum flowing pressure of 130KPa and a maximum static pressure of 860 KPa.

### OPERATION

The shower is activated by pulling the triangle pull rod. Once the valve is activated the head will continue to discharge water until the valve is manually closed, this is done by pushing the pull rod to the off position. The eye wash is activated by foot pedal and pushing the activation push handle rearward. The unit will operate until the activation bar is manually pulled to the off position.



The eye wash is activated by pushing the activation push handle rearward. The unit will operate until the activation push handle is manually pulled to the off position.



### FLOW DATA

#### EYE-WASH

FLOW RATE (LPM) : 20

#### SHOWER

FLOW RATE (LPM) : 76

**WARNING :** Use only genuine Speakman parts when replacing or repairing components. When ordering quote correct part numbers listed.

To order free call 1 800 444 022 or free fax 1 800 444 024



**SPEAKMAN**  
SAFETY PRODUCTS

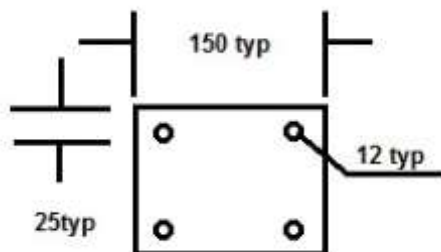
**PEM 607**  
Combination Deluge Shower  
& Non Aerated Eye Face Wash

**PBA**  
SAFETY  
FREE CALL 1 800 444 022  
www.pbasafety.com.au

# Installation, Maintenance and Operating Instructions

## MAINTENANCE SCHEDULE

Should you need to repair this unit, please reference the parts list below for correct part numbers. Before any maintenance is done be sure the electrical supply is isolated and the water supply is shut off.



Base Plate Details

## MAINTENANCE SCHEDULE

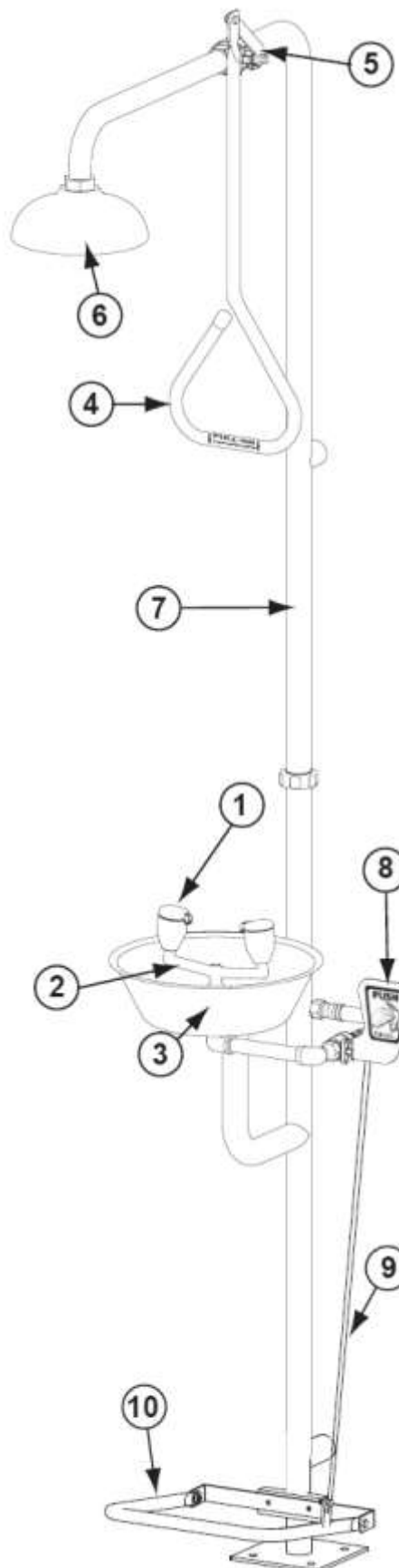
	Activate eyewash unit using push handle
	Allow water to flow for 30 seconds to flush line.
WEEKLY	Ensure water flows evenly from both outlets. Ensure water is clean.
YEARLY	- Ensure unit complies with AS 4775 –2007

## SPARE PARTS LIST

No.	DESCRIPTION	PART No.
1	Spray Head Assembly	G38 0416
2	Complete Eye/Face Wash Assy	G05 0715
3	Stainless Steel Bowl	SR 03001
4	Pull Rod Assembly	G47 0043026
5	Activation Ball Valve & Handle	SE 910H
6	200mm Cyclac Shower Head	SE 870
7	Combination Frame	SA 03002
8	Activation Ball Valve & Lever	SE 911
9	Foot Pedal Connect Cable	SA 03017
10	Stainless Steel Foot Pedal	SE Treadle

**WARNING :** Use only genuine Speakman parts when replacing or repairing components. When ordering quote correct part numbers listed.

To order free call 1 800 444 022 or free fax 1 800 444 024



**SPEAKMAN®**  
SAFETY PRODUCTS

**PEM 607**  
Combination Deluge Shower  
& Non Aerated Eye Face Wash

**PBA SAFETY**  
FREE CALL 1 800 444 022  
www.pbasafety.com.au